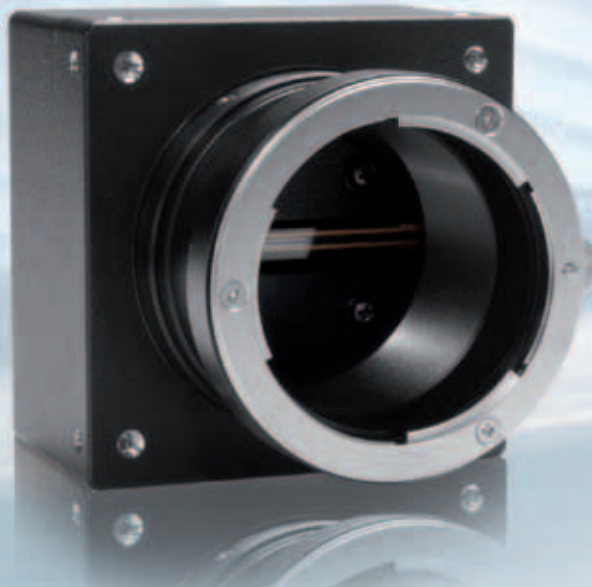


Basler L400 and L800 Series

Line Scan Cameras



- 4k and 8k line scan cameras with up to 14 kHz line rate
- Brilliant image quality with CCD sensors
- 100% quality checked and calibrated for high performance
- Multiple features available

Excellent Image Quality Combined with High Resolution

Basler L400 and L800 cameras are equipped with top quality sensors that make them a perfect fit for applications where higher resolution is required. In addition, a high performance backend and an industrial grade housing make the L400 and L800 series versatile, reliable tools for many applications.

The L400 and L800 series of digital line scan cameras is designed for industrial users who require high resolution with high-speed data acquisition. A standard Camera Link® interface simplifies system integration and gives you increased flexibility when changing cameras or frame grabbers. The compact industrial grade housing, a combination of useful features, and the Windows setup tool guarantee easy integration in your application.

L400 and L800 high performance cameras are a perfect fit for a variety of vision applications including printed circuit board inspection, flat panel display inspection, postal sorting and document scanning, print inspection, web inspection, food inspection, and many others.



Your benefits include:

- High sensitivity combined with an exceptional signal-to-noise ratio
- 4080 pixel resolution with line rates up to 14.1 kHz with the L400 variants
- 8160 pixel resolution with line rates up to 14.1 kHz with the L800 variants
- A small, rugged housing designed for use in industrial equipment
- LED indications and test image generation capabilities reduce your integration time and troubleshooting
- Windows® setup tool (CCT+) lets you configure your camera with ease
- 100% quality checked and calibrated to give you consistent performance and reliability
- Useful features such as a line sum, a line counter, and shading correction enhance your range of application solutions

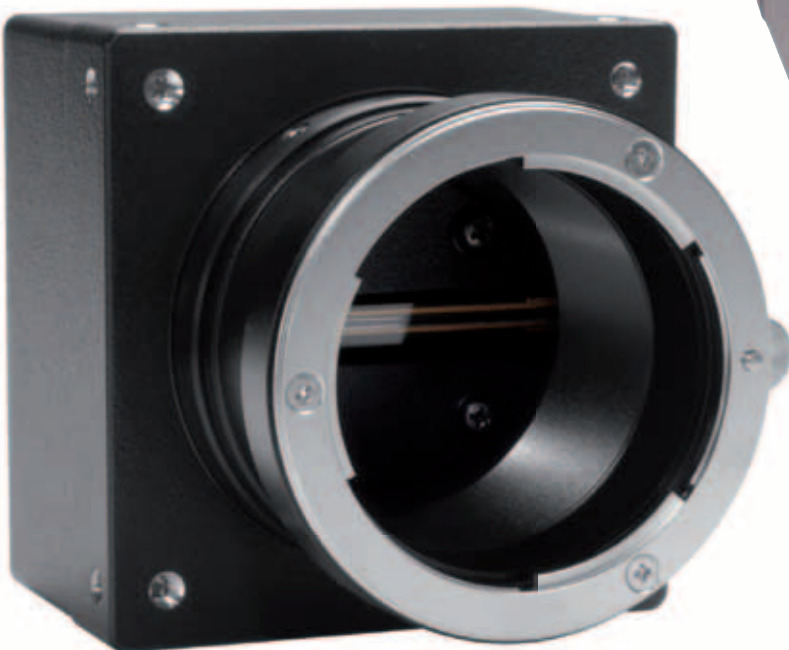
Camera Link[®]

Camera Link is a communication link for visual applications in the fields of science and industry. It was founded in the year 2000 by the leading companies in the machine vision arena. Camera Link enables a maximum data transmission rate of 800 MB per second depending on the configuration. Frame grabbers which collect and evaluate the data are usually used to connect the camera and the PC via the Camera Link interface.

The most important benefits afforded by Camera Link are:

- Accepted communication standard for vision technologies (camera frame grabber)
- Simple and standardized cable concept
- Particular suitability for high data rates
- Standardized data protocol for several types of data transfer, for example single/dual tap, 8 bit, 10 bit, RGB, etc.
- Serial communication to the camera via the frame grabber communication port

The Camera Link standard means that many frame grabbers produced by different vendors are compatible with the L400 and L800 cameras. These vendors are for instance: Cognex, Matrox, National Instruments, Euresys, Matrix Vision, BitFlow, Mikrotrotron. An overview with more frame grabber vendors and the compatible frame grabbers can be found at the webpage www.baslerweb.com.



Specifications

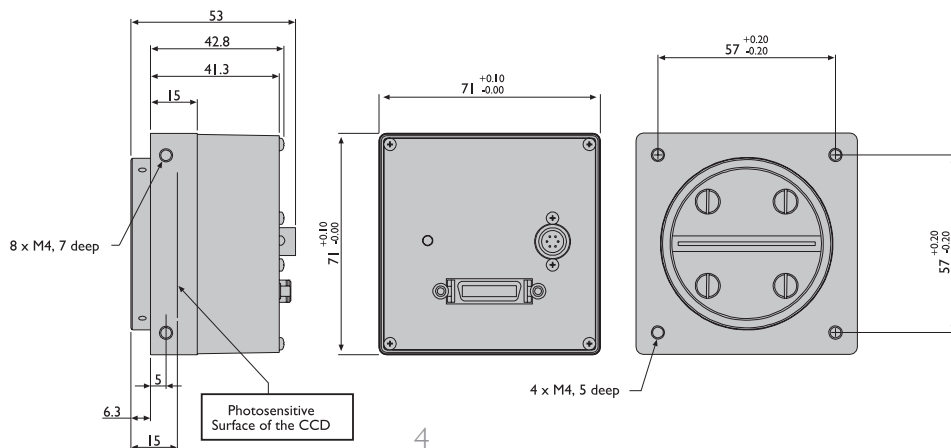


Basler L400 and L800 Series	L401k	L402k	L801k	L802k	L803k
Camera					
Sensor Size	4080 pixels	4080 pixels	8160 pixels	8160 pixels	8160 pixels
Sensor Type	Linear CCD				
Pixel Size	10 μm x 5 μm (10 μm pitch)	10 μm x 5 μm (10 μm pitch)	5 μm x 5 μm (5 μm pitch)	5 μm x 5 μm (5 μm pitch)	5 μm x 5 μm (5 μm pitch)
Camera Link Pixel Clock (MHz)	30	30	20	40	60
Max. Data Rate (MPixels/s)	28	56	37	75	112
Max. Line Rate (KHz)	7.1	14.1	4.7	9.4	14.1
Pixel Depths	Selectable 8 bit or 10 bit				
Video Output Formats	Single tap 8 bit or single tap 10 bit	Dual tap 8 bit or dual tap 10 bit	Dual tap 8 bit or dual tap 10 bit	Dual tap 8 bit or dual tap 10 bit	Dual tap 8 bit or dual tap 10 bit
Synchronization	Via external signal or free run				
Exposure Control	Edge-controlled, level controlled, or programmable				
Mechanical / Electrical					
Housing Size (L x W x H)	41.3 mm x 71 mm x 71 mm (without lens adapter)				
Housing Temperature	Up to 50 °C				
Lens Mount	F-mount				
Power Requirements	12VDC +/- 10% max. 6 W @ 12VDC	12VDC +/- 10% max. 7 W @ 12VDC	12VDC +/- 10% max. 5 W @ 12VDC	12VDC +/- 10% max. 6 W @ 12VDC	12VDC +/- 10% max. 7 W @ 12VDC
Weight (typical)	~ 300 g (without F-mount adapter)				
Conformity	CE, FCC, RoHS				
Accessories	Optional heat sink available				

Specifications may change without prior notice

For detailed technical information, please see the camera manuals that can be found on our website: www.baslerweb.com/manuals

Dimensions (in mm)

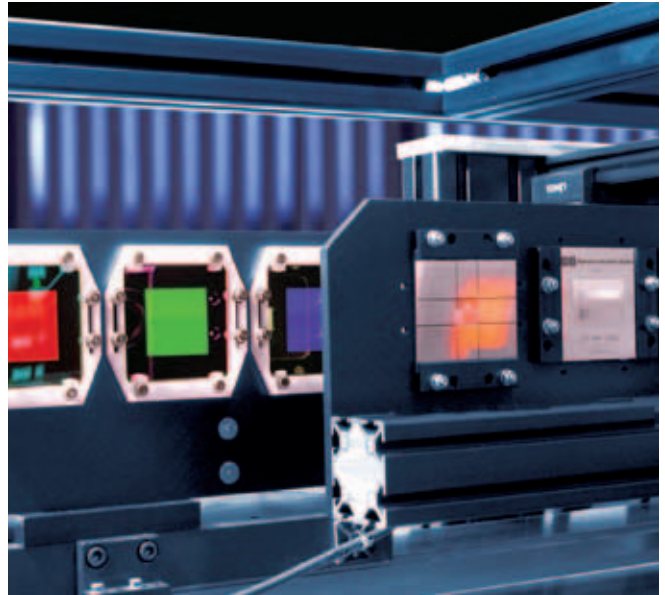


What Makes Basler Camera Quality So Special?



To ensure consistently high product quality, we employ several quality inspection procedures during manufacturing. This list describes some of the most essential actions we take to meet your highest requirements.

- The back focal length on each camera is carefully measured and adjusted. This guarantees an optimum distance between the lens flange and the sensor and ensures compliance with optics standards.
- Our advanced Camera Test Tool (CTT+), the first fully-automated inspection system for digital cameras, checks all of the significant quality aspects of each camera we produce. The CTT+ is a unique combination of optics, hardware, and software that can be quickly and efficiently used to calibrate a camera and to measure its performance against a set of standards. For defined sets of conditions, an automated software program examines the camera's output, makes any calibration adjustments necessary, and compares the output to a strictly defined set of performance criteria.



RoHS Compliance

The Basler L400 and L800 series are RoHS compliant. This is especially important in applications where the end-user requires strict RoHS compliance in all system components.





Basler AG
Germany, Headquarters
Phone +49 4102 463 500
Fax +49 4102 463 599
bc.sales.europe@baslerweb.com

USA
Phone +1 610 280 0171
Fax +1 610 280 7608
bc.sales.usa@baslerweb.com

Japan
Phone +81 45 227 6210
Fax +81 45 227 6220
bc.sales.japan@baslerweb.com

Singapore
Phone +65 6425 0472
Fax +65 6425 0473
bc.sales.asia@baslerweb.com

Korea
Phone +82 707 1363 114
Fax +82 707 0162 705
bc.sales.korea@baslerweb.com