

# Basler IP Fixed Dome Camera



## Pendant Mount Kit Installation Guide

Document Number: AW001042

Version: 01 Language: 000 (English)

Release Date: 10 October 2011

## **Contacting Basler Support Worldwide**

### **Europe and the Middle East:**

Basler AG  
An der Strusbek 60 - 62  
22926 Ahrensburg  
Germany

Phone: +49-4102-463-303  
Fax: +49-4102-463-599  
Email: [bc.support.ip.emea@baslerweb.com](mailto:bc.support.ip.emea@baslerweb.com)

### **The Americas:**

Basler, Inc.  
855 Springdale Drive, Suite 203  
Exton, PA 19341  
U.S.A.

Phone: +1-610-280-0171  
Fax: +1-610-280-7608  
Email: [bc.support.ip.usa@baslerweb.com](mailto:bc.support.ip.usa@baslerweb.com)

### **Asia:**

Basler Asia Pte. Ltd  
8 Boon Lay Way  
# 03 - 03 Tradehub 21  
Singapore 609964

Phone: +65-6425-0472  
Fax: +65-6425-0473  
Email: [bc.support.ip.asia@baslerweb.com](mailto:bc.support.ip.asia@baslerweb.com)

**[www.basler-ipcam.com](http://www.basler-ipcam.com)**

**All material in this publication is subject to change without notice and is copyright Basler Vision Technologies.**

# 1 Introduction



## WARNING

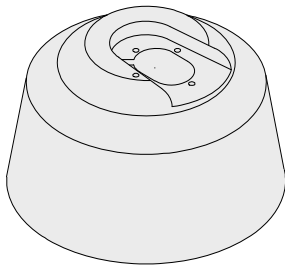
The installation should be made by a qualified service person and should comply with all local codes. The connection to the ceiling must be able to support at least two times the weight of the pendant mount kit plus the dome camera.

The kit plus the dome camera weighs 3.3 kilograms (7.3 pounds).

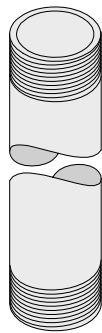
## Document Intent

The intent of this document is to help you install a pendant mount kit for the Basler IP Fixed Dome Camera. This document should be used in combination with the *Basler IP Fixed Dome Camera Installation Guide*. The dome camera installation guide includes information you will need to successfully attach the dome camera to the pendant mount.

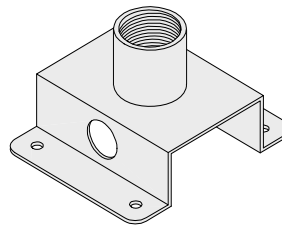
## Kit Contents



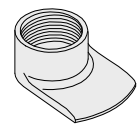
Camera Adapter



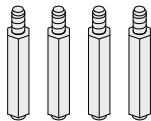
Pendant Pipe



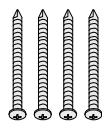
Ceiling Mount Bracket



Pipe Adapter



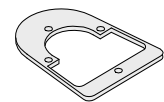
Spacer Bolts



Self-drilling Screws  
(4 x 37)

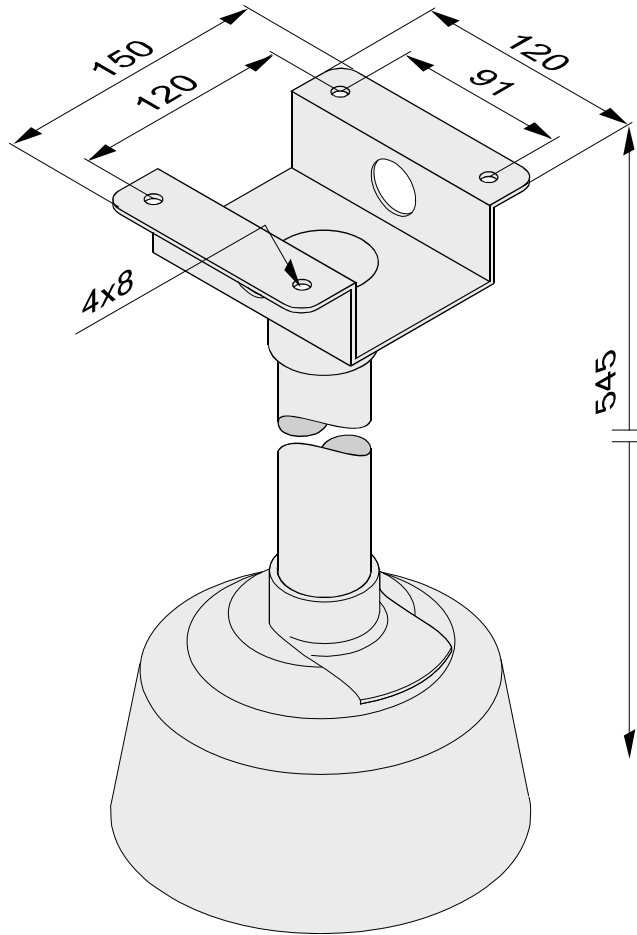


M4 x 8  
Screws



Camera Adapter Seal

## Dimensions (in mm)



## 2 Installation

The pendant mount and the dome camera should be assembled as shown in the exploded drawing on the next page.

**The connection to the ceiling must be able to support at least two times the weight of the pendant mount kit plus the dome camera. The pendant mount kit plus the dome camera weighs 3.3 kilograms (7.3 pounds).**

As you are assembling the pendant mount kit, we suggest that you thread the network cable and the secondary cable through the unit as shown in the exploded drawing.

We recommend assembling the kit in the following order:

1. Attach the ceiling mount bracket in the desired position in the ceiling using the four self-drilling screws (4 x 37).
2. Screw the pendant pipe into the ceiling mount bracket.
3. Attach the camera adapter seal to the camera adapter (the seal is a peel-and-stick type).
4. Attach the pipe adapter to the camera adapter with four M4 x 8 screws.
5. Screw the camera adapter into the pendant pipe.
6. Attach the dome camera base to the camera adapter with three M4 x 8 screws.
7. Follow the instructions in the Basler IP Fixed Dome Camera Installation Guide to complete the dome camera installation.

